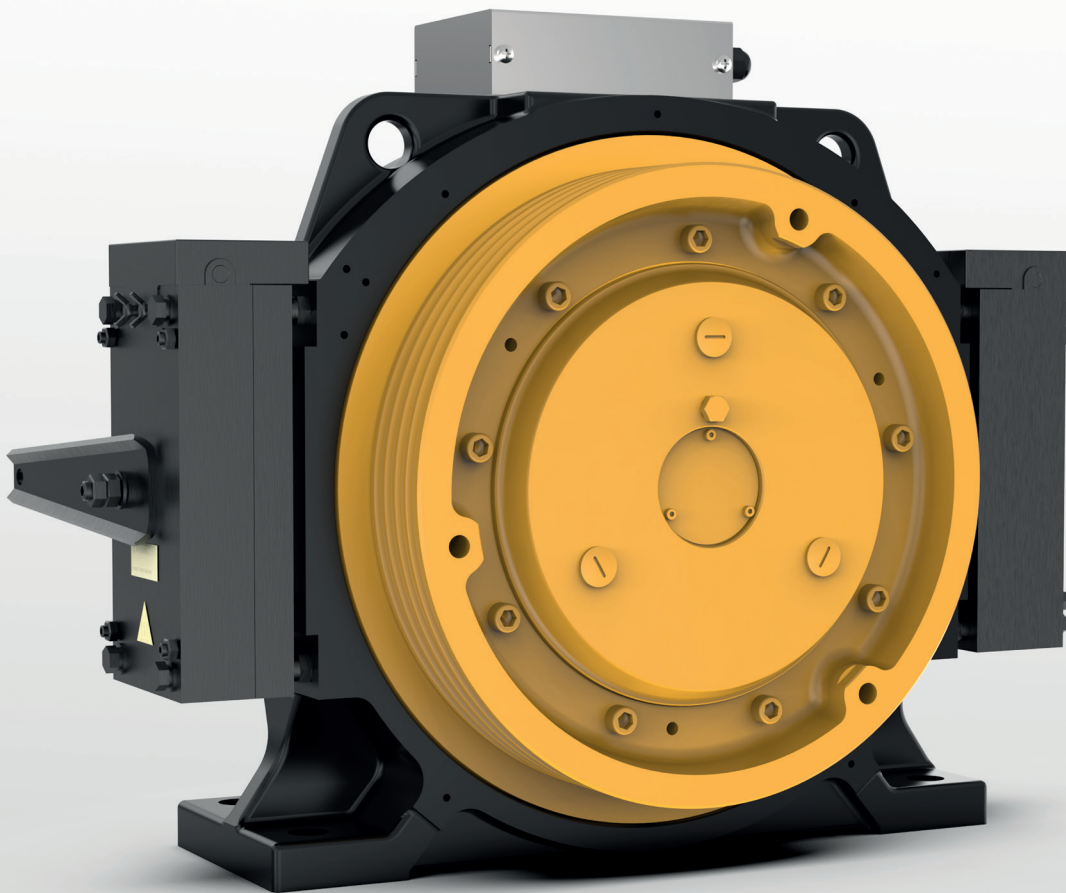


# GEARLESS SGP 10

machine for lifting solutions

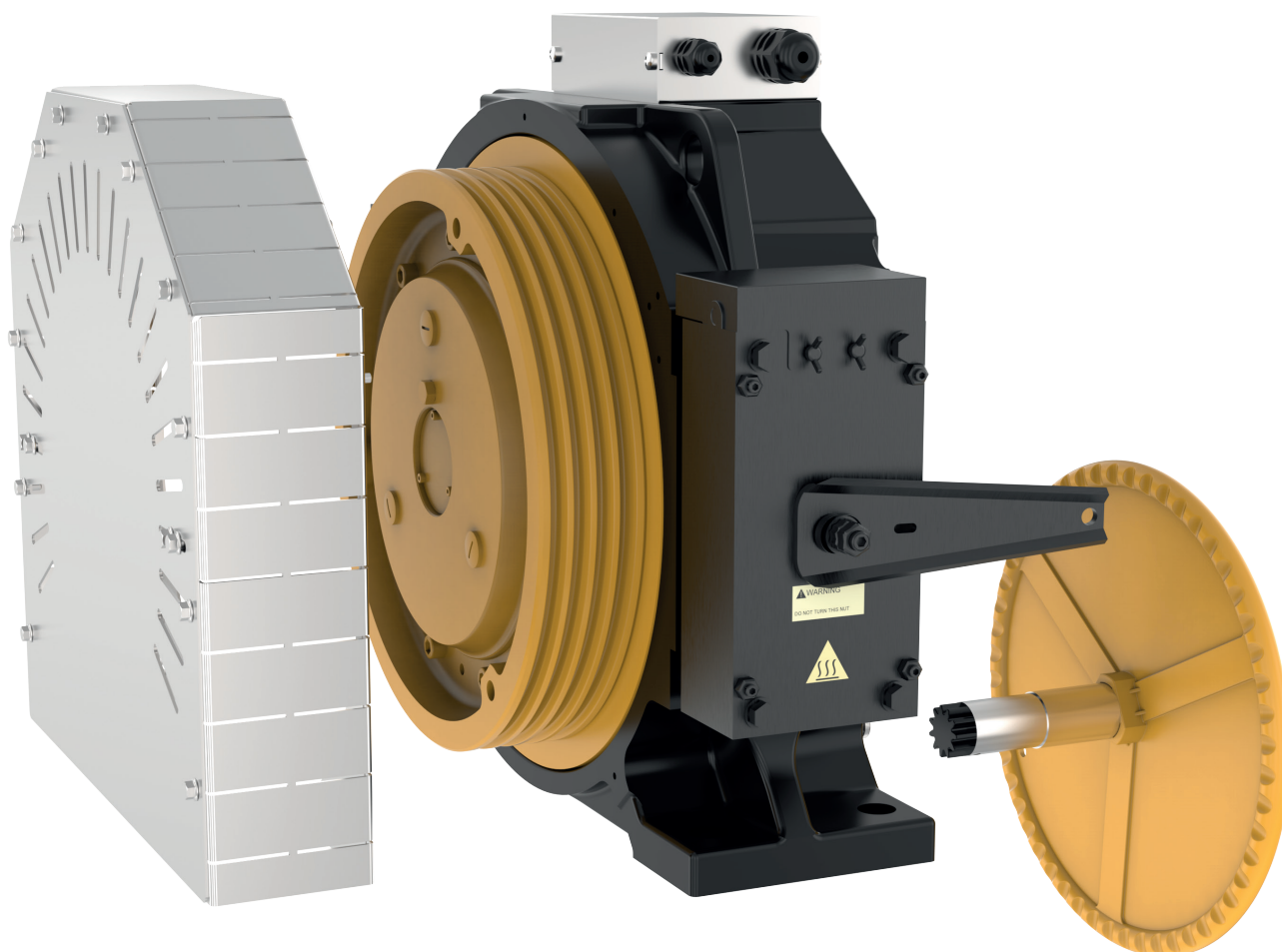


Soluzione compatta progettata per applicazioni MRL, ma utilizzabile anche in applicazioni MR.

*Compact solution designed for MRL applications but usable also in MR applications*

Carico nominale max in 2:1 – *Max Rated Load in 2:1 = 630kg*

Carico nominale max in 1:1 – *Max Rated Load in 1:1 = 320kg*



Coppia Nominale – *Rated torque* → 400 Nm (S3 -40%)

Coppia Frenante – *Braking Torque* → 2x530 Nm

Tensione Freno – *Brake Voltage* → 207Vdc

Range Potenza – *Power Range (min-max)* → 4.2 – 7.3 kW

Gamma Velocità – *Speed Range* 0,5 ... 1.75 m/s

Carico Statico Massimo – *Max. Static Load* → 19,6 kN -2000 kg

Tensione Nominale – *Rated Voltage* → 360 V

Puleggia di trazione – *Traction Sheave* → Ø 400mm

Max nr. e Ø Funi – *Max Ropes nr. and Ø* → 4 x 10mm

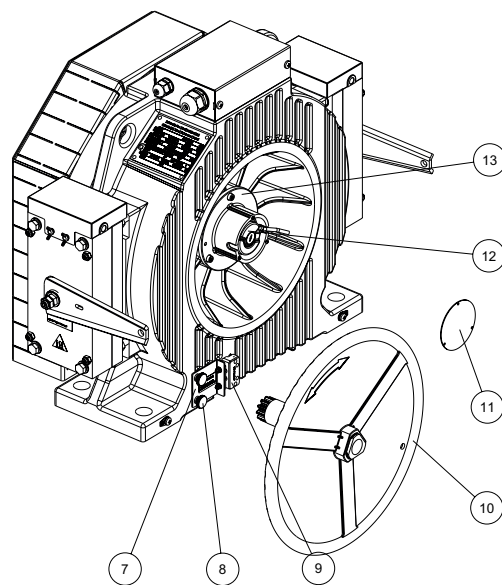
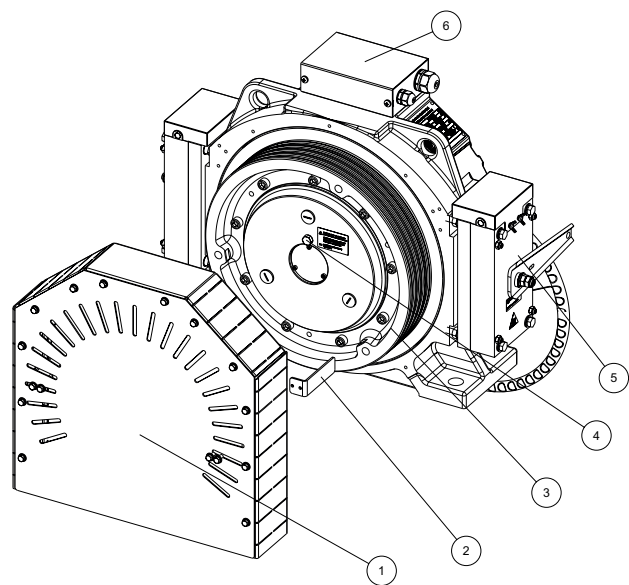
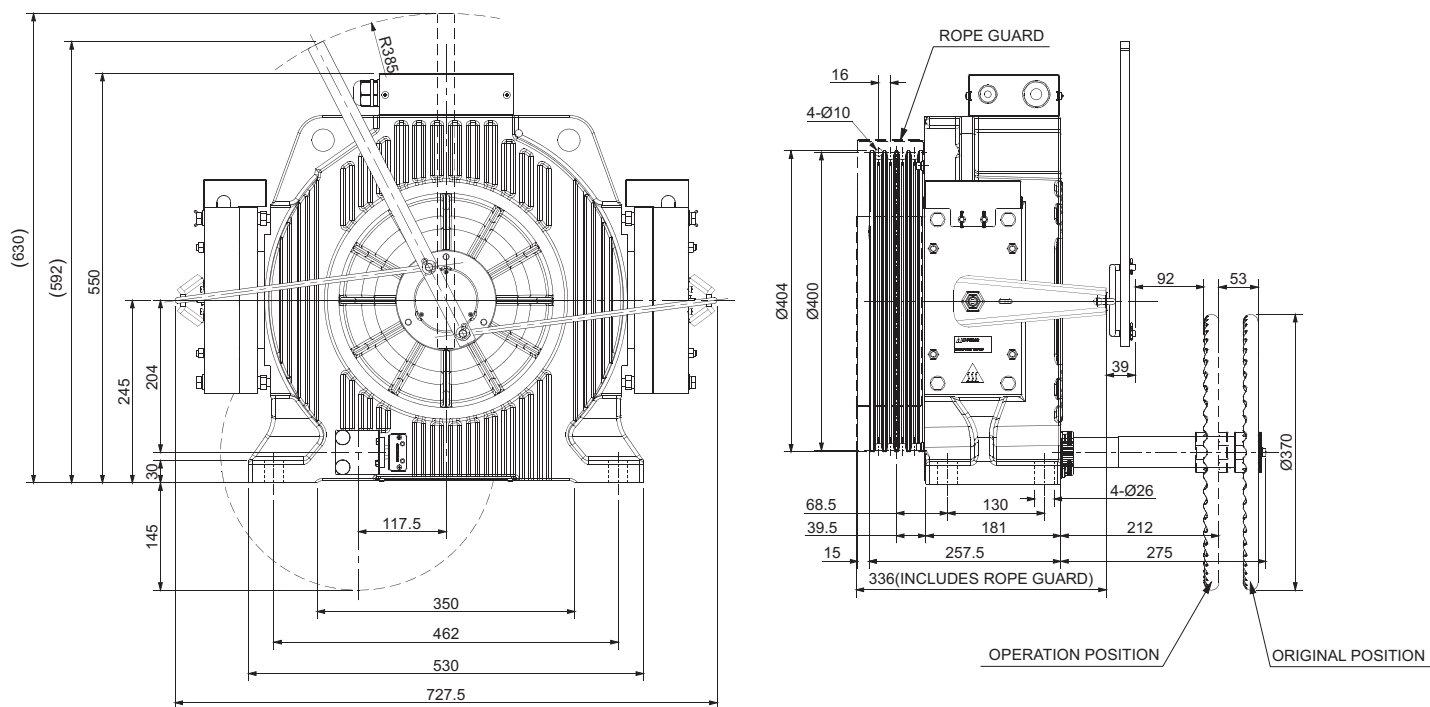
Profilo Gole U con intaglio ( $\gamma=30^\circ$ ;  $\beta=95^\circ$ ) – *Grooves profile U with undercut ( $\gamma=30^\circ$ ;  $\beta=95^\circ$ )*

Interasse gole – *Pitch* → 16mm

Numero Poli – *Poles nr.* → 32

Encoder → ERN1387

Peso Massimo – *Maximum Weight* → 245 kg



## ELENCO PARTI/ACCESSORI - PARTS/ACCESSORIES LIST

- 1 – Protezione puleggia di trazione / *Traction sheave protection*
- 2 – Vite / *Screw*
- 3 – Puleggia di trazione / *Traction sheave*
- 4 – Antiscarrucolamento / *Rope Guard*
- 5 – Freno / *Brake*
- 6 – Scatola morsettiera / *Terminal box*
- 7 – Flangia di copertura / *Cover plate*
- 8 – Vite zigrinata / *Knurled screw*
- 9 – Interruttore evacuazione di emergenza / *Evacuation monitor switch*
- 10 – Volano manovra a mano / *Evacuation hand wheel*
- 11 – Flangia protezione encoder / *Encoder protection plate*
- 12 – Encoder
- 13 – Flangia fissaggio encoder / *Encoder assembly flange*



**Sicor S.R.L.**

Viale Caproni, 32 Rovereto (TN) - Italy • Tel: +39 0464 484 111 • [info@sicoritaly.com](mailto:info@sicoritaly.com)

[www.sicoritaly.com](http://www.sicoritaly.com)